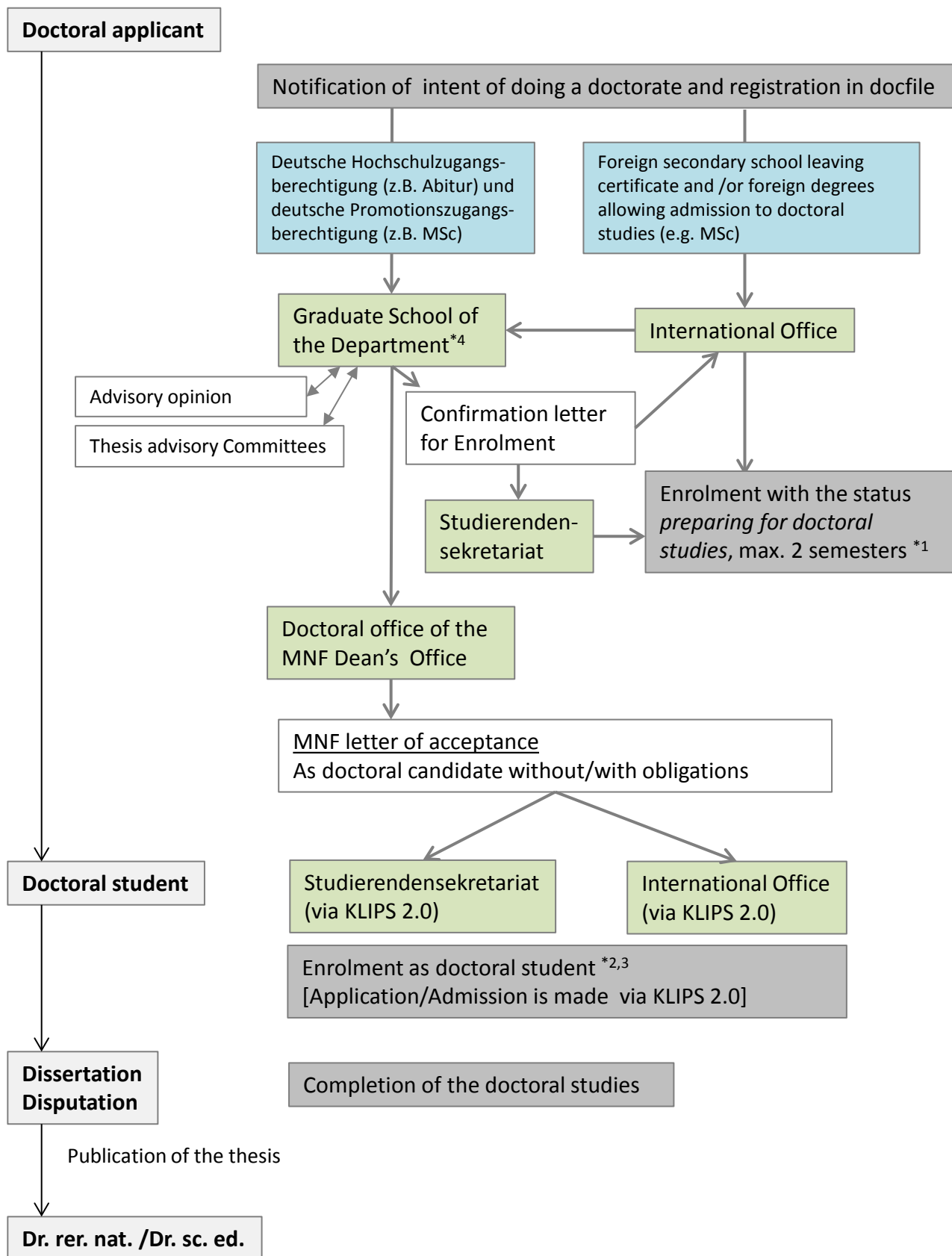


Applying for admission to doctoral studies and immatriculation



MNF = Faculty of Mathematics and Natural Sciences

*1 Enrolment for the status *preparing for doctoral studies* with confirmation letter by one of the departments of the MNF

*2 Enrolment as doctoral student only with the confirmation letter stating the acceptance as doctoral candidate by the MNF

*3 Enrolment with the status *re-enrolment blocked* if essential documents like the MSc transcript or degree were not yet handed in.

*4 Department-wide Graduate Schools of the Faculty <https://www.mathnat.uni-koeln.de/16273.html>